

PRODUCT CATALOG

METALLIC TILE
FOLDED METAL SHEET
CORRUGATED STEEL SHEET
METAL FENCE SLATS

GUTTER SYSTEM
METALLIC TILE ACCESSORIES
RETRO PANEL ACCESSORIES
ANTI-CONDENSATION FOIL

www.bilka.com



BILKA[®]
• roof system • rain system •



ABOUT OUR COMPANY

BILKA is a 100% Romanian company specialized in the production and development of complete roof systems (metal roofing, gutter systems and accessories) for residential and industrial buildings. 1 of 4 roofs sold in Romania is a BILKA roof.

BILKA factory is located in Brasov and was founded in 2007. The company's business takes place on an area of 190,000 square meters, dedicated to production halls, warehouses and offices.

The production lines are fully automated, relying on state-of-the art technologies.

CHOOSE A MODERN ROOF FOR YOUR HOUSE USING THE BILKA METAL ROOFING

Whether you opt for a classical model or a specific architectural style, BILKA metal roofing will offer your house all the essential protection. This is due to BILKA technology being designed to last for decades.

Lifespan

A metal tile roof, if assembled as recommended by the specialists, must have the same lifetime as the construction that it was mounted on, at least 60 years. The metal roofing is resistant to rain, wind, snow, mold, so that the metal roof tile will not be affected.

Weight

A metal tile roof, when installed according to specialist recommendations, should last as long as the building it covers, typically at least 60 years. This metal roofing is highly resistant to rain, wind, snow, and mold, ensuring the metal roof tiles remain unaffected.

Tightness

The metal roofing modules use an overlapping grip system and self-tapping screws to ensure a perfect seal, preventing any water leaks beneath the covering.

Fire resistance

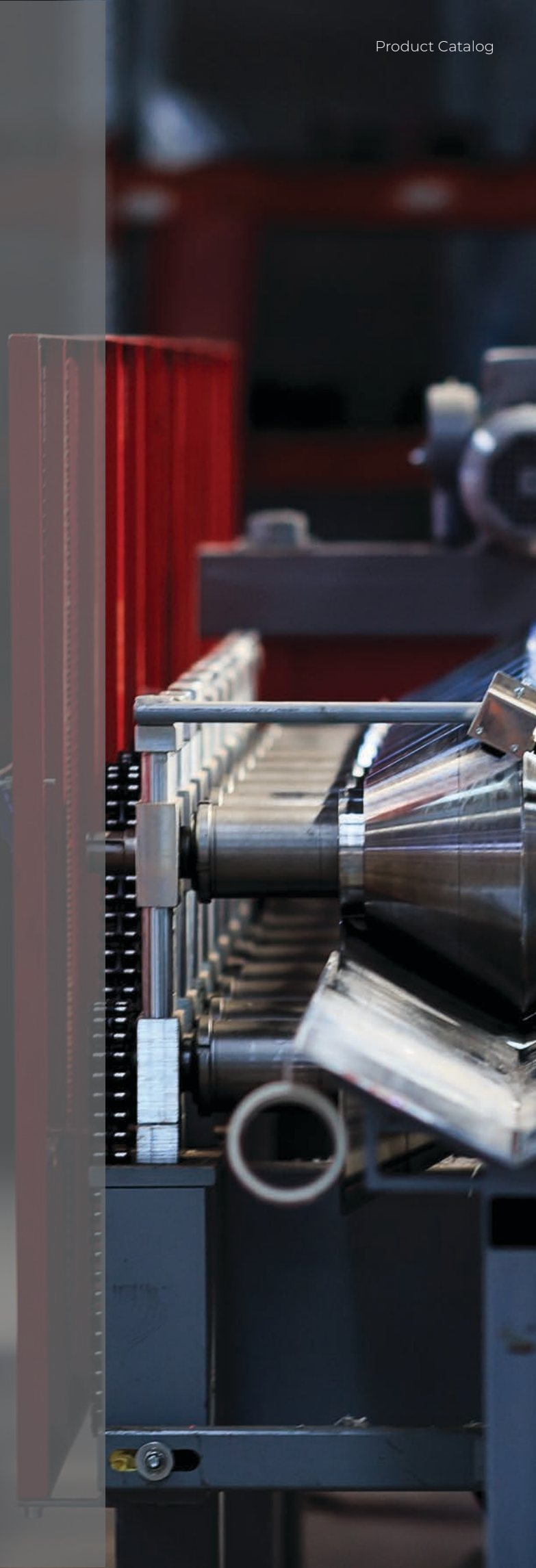
High degree of resistance to the propagation and spread of fire.

Aesthetics

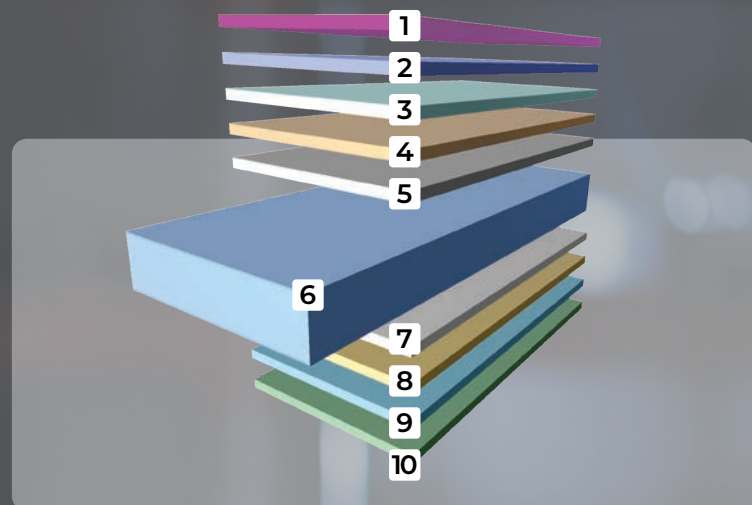
The roof should enhance the beauty of the building. Metal tile roofing is the ideal solution, offering a wide range of colors, materials, and shapes to suit any type of construction and blend seamlessly with the community's style.

The metal tiles are commonly known as metal tile sheet or simply, roof metal sheet, manages to incorporate these characteristics, as a product allowing complete freedom in choosing the colors and the finishes. Another important feature of metal roofing is that it allows installation on curved or very steep surfaces.

Commonly referred to as metal tile sheets or simply roof metal sheets, metal tiles combine these characteristics, offering complete freedom in choosing colors and finishes. Additionally, metal roofing can be installed on curved or very steep surfaces.



MATERIAL COMPOSITION - LAYER SYSTEM:



MATERIAL COMPOSITION - LAYER SYSTEM: MATTE

- 1 - PVC protective film: thickness 50 - 200 µm (application according to the order)
 - 2 - surface varnish: polyester (PE) 35 µm*
 - 3 - surface varnish: polyester (PE), GrandeMat finish 50 µm
 - 4 - base layer: polyester (PE) min. 5 µm
 - 4/8 - passivation layer
 - 5/7 - zinc coating: 225 - 275 g/m²
 - 6 - steel sheet
 - 9 - base layer: polyester (PE) min. 7 µm
 - 10 - base layer: polyester (PE), GrandeMat finish, min. 12 µm
 - 10 - anti-condensation layer (application according to the order)
- *upon request, the paint layer can be of 200 µm, with a delivery deadline of maximum 60 days

MATERIAL COMPOSITION - LAYER SYSTEM: GLOSSY

- 1 - PVC protective film: thickness 50 - 200 µm (application according to the order)
- 2 - surface varnish: polyester (PE) 25 µm
- 3 - base layer: polyester (PE) min. 5 µm
- 4/8 - passivation layer
- 5/7 - zinc coating: 225 - 275 g/m²
- 6 - steel sheet
- 9 - base layer: polyester (PE) min. 7 µm
- 10 - anti-condensation layer (application according to the order)

BILKA® COLOR RANGE

Glossy shades



RAL 3000
flame red



RAL 3005
wine red



RAL 3009
oxide red



RAL 3011
brown red



RAL 5010
blue



RAL 6005
green



RAL 7016
anthracite
grey



RAL 7024
graphite
grey



RAL 8003
clay brown



RAL 8004
copper
brown



RAL 8017
chocolate
brown



RAL 9002
white



RAL 9005
black



RAL 9006
silver



Matte shades



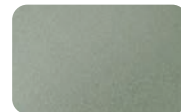
RAL 3005
wine red



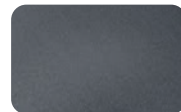
RAL 3009
oxide red



RAL 6005
green



RAL 6020
chrome
green



RAL 7016
anthracite
grey



RAL 7024
graphite
grey



RAL 8004
copper brown



RAL 8017
chocolate
brown



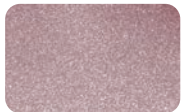
RAL 8019
grey brown



RAL 9005
black



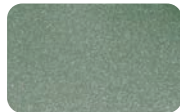
GrandeMat shades



RAL 3005
wine red



RAL 3011
brown red



RAL 6005
green



RAL 7011
grey



RAL 7024
graphite
grey



RAL 8004
copper
brown



RAL 8017
chocolate
brown



RAL 8019
grey brown



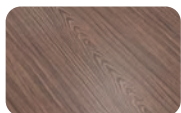
RAL 9005
black



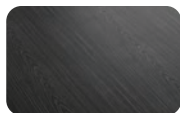
Wood Finish



PALISANDER
Golden



PALISANDER
Anticato



BLACK
Wood



MAGNELIS



MAGNELIS



Double painted steel 0,60 mm



RAL 3005
wine red



RAL 3009
oxide red



RAL 3011
brown red



RAL 6020
chrome green



RAL 7011
grey



RAL 7016
anthracite grey



RAL 7024
graphite grey



RAL 8003
clay brown



RAL 8004
copper brown



RAL 8017
chocolate brown



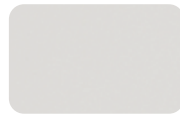
RAL 8019
grey brown



RAL 9005
black



RAL 9006
silver



RAL 9010
white



Double painted steel matte 0,60 mm



RAL 7016
anthracite grey



RAL 7024
graphite grey



RAL 8017
chocolate brown



RAL 8019
grey brown



RAL 9005
black



Double painted steel glossy 0,50 mm



RAL 7016
anthracite grey



RAL 8017
chocolate brown



Double painted steel matte 0,50 mm



RAL 7016
anthracite grey



RAL 8017
chocolate brown



RAL 8019
grey brown



RAL 9005
black



Double painted steel glossy 0,40 mm



RAL 7016
anthracite grey



RAL 7024
graphite grey



RAL 8017
chocolate brown



Double painted steel matte 0,40 mm



RAL 7016
anthracite grey



RAL 7024
graphite grey



RAL 8017
chocolate brown



RAL 8019
grey brown



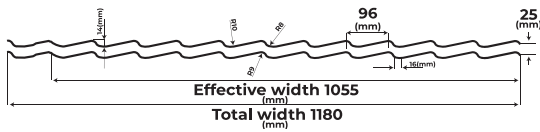
RAL 9005
black



- For pre-painted steel products with a thickness of 0.40 mm, a 5-year warranty is granted for color and corrosion characteristics.
- For pre-painted steel products with thickness < 0.40 mm 2 years conformity guarantee is granted.

DACIC by BILKA®

NEW



TECHNICAL CHARACTERISTICS

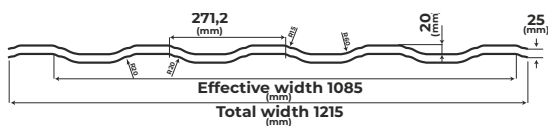
Material	Steel sheet zinc-plated on both sides and protected with polyester coating
Nominal thickness	0,45 - 0,60 mm
Total width	1180 mm
Usable width	1055 mm
Module length	350 / 375 / 400 mm
Module height	25 mm
Total height	39 mm
Weight per area	4 - 5 kg / m ²

- Length 0,5 - 7m
- Warranty 10 - 30 years
- Life span 60 years
- Easy to assemble

Model: Dacic
Color: RAL 7016
Matte Finish



ADRIATIC by BILKA®



TECHNICAL CHARACTERISTICS

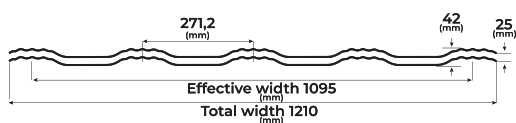
Material	Steel sheet zinc-plated on both sides and protected with polyester coating
Nominal thickness	0,45 - 0,60 mm
Total width	1215 mm
Usable width	1085 mm
Module length	350 / 400 mm
Module height	25 mm
Total height	42 mm
Weight per area	4 - 5 kg / m ²

- Length 0,5 - 7m
- Warranty 10 - 30 years
- Life span 60 years
- Joining on both sides

Model: Adriatic
Color: RAL 9005
Matte Finish



HELLENIC by BILKA®

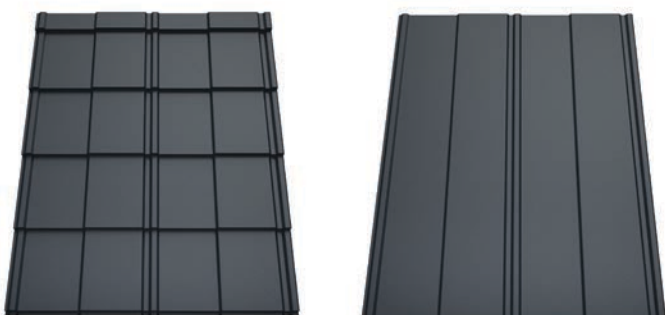


TECHNICAL CHARACTERISTICS

Material	Steel sheet zinc-plated on both sides and protected with polyester coating
Nominal thickness	0,45 - 0,60 mm
Total width	1210 mm
Usable width	1095 mm
Module length	350 / 400 mm
Module height	25 mm
Total height	42 mm
Weight per area	4 - 5 kg / m ²

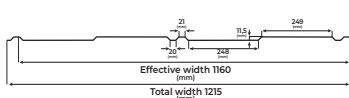
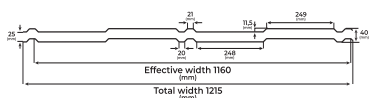


BRITANIC by BILKA®



BRITANIC

BRITANIC RETRO



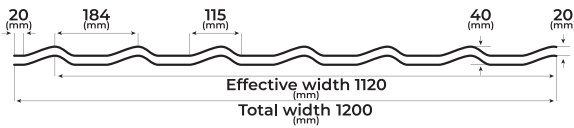
TECHNICAL CHARACTERISTICS

Material	Steel sheet zinc-plated on both sides and protected with polyester coating
Nominal thickness	0,45 - 0,60 mm
Total width	1215 mm
Usable width	1160 mm
Module length	350 / 400 mm
Module height	25 mm
Total height	40 mm
Weight per area	4 - 5 kg / m ²



CLASIC by BILKA®

Model: Clasic
Color: RAL 7024
Matte Finish



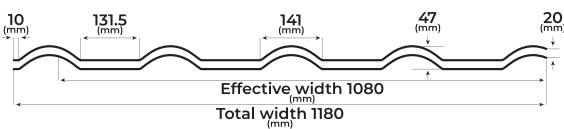
TECHNICAL CHARACTERISTICS

Material	Steel sheet zinc-plated on both sides and protected with polyester coating
Thickness	0,40 - 0,60 mm
Total width	1200 mm
Usable width	1120 mm
Module length	350 / 400 mm
Module height	20 mm
Total height	40 mm
Weight per area	3 - 5 kg / m ²



BALCANIC by BILKA®

Model: Balcanic
Color: RAL 9005
Matte Finish

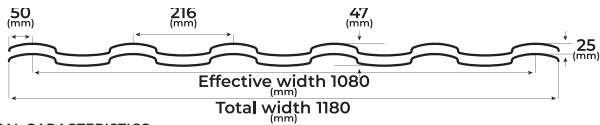


TECHNICAL CHARACTERISTICS

Material	Steel sheet zinc-plated on both sides and protected with polyester coating
Thickness	0,45 - 0,60 mm
Total width	1180 mm
Usable width	1080 mm
Module length	350 / 400 mm
Module height	20 mm
Total height	47 mm
Weight per area	4 - 5 kg / m ²



IBERIC by BILKA®

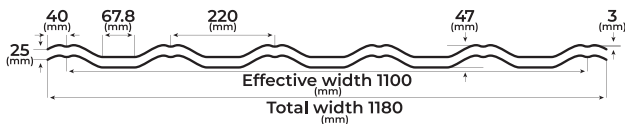


TECHNICAL CHARACTERISTICS

Material	Steel sheet zinc-plated on both sides and protected with polyester coating
Thickness	0,45 - 0,60 mm
Total width	1180 mm
Usable width	1080 mm
Module length	350 / 400 mm
Module height	25 mm
Total height	47 mm
Weight per area	4 - 5 kg / m ²



GOTIC by BILKA®

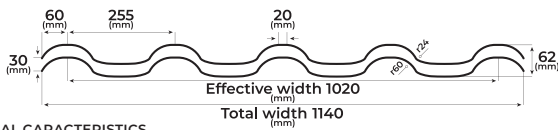


TECHNICAL CHARACTERISTICS

Material	Steel sheet zinc-plated on both sides and protected with polyester coating
Thickness	0,45 - 0,60 mm
Total width	1180 mm
Usable width	1100 mm
Module length	350 / 400 mm
Module height	25 mm
Total height	47 mm
Weight per area	4 - 5 kg / m ²



ROMANIC by BILKA®



TECHNICAL CHARACTERISTICS

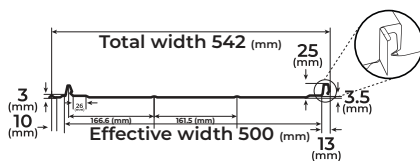
Material	Steel sheet zinc-plated on both sides and protected with polyester coating
Thickness	0,50 - 0,60 mm
Total width	1140 mm
Usable width	1020 mm
Module length	350 / 400 mm
Module height	30 mm
Total height	62 mm
Weight per area	4 - 5 kg / m ²



Model: Romanic
Color: RAL 9005
GrandeMat Finish



RETRO PANEL PLUS DOUBLE LINE by BILKA®



TECHNICAL CHARACTERISTICS

Material	Steel sheet zinc-plated on both sides and protected with polyester coating
Thickness	0,45 - 0,60 mm
Total width	542 mm
Usable width	500 mm
Rebate height	25 mm
Weight per area	4 - 5 kg / m ²



Model: Retro Panel Plus Double Line
Color: RAL 7024
Matte finish



RETRO PANEL/ PLUS

by **BILKA®**



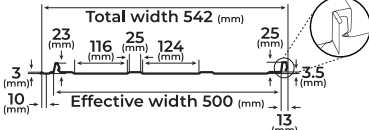
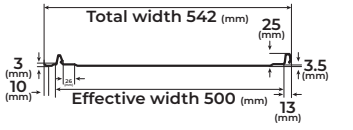
✓ Dripstop

✓ Soundcontrol



✓ Dripstop

✓ Soundcontrol



TECHNICAL CHARACTERISTICS

Material	Steel sheet zinc-plated on both sides and protected with polyester coating
Thickness	0,45 - 0,60 mm
Total width	542 mm
Usable width	500 mm
Rebate height	25 mm
Weight per area	4 - 5 kg / m ²

- Length
1-8 m
- Warranty
10 - 30 years
- Life span
60 years
- Joining
with a click



RETRO PANEL FLAT/ PLUS FLAT

by **BILKA®**



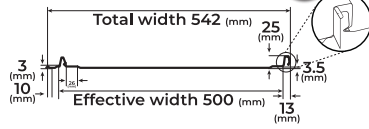
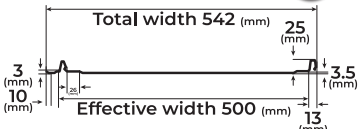
✓ Dripstop

✓ Soundcontrol



✓ Dripstop

✓ Soundcontrol



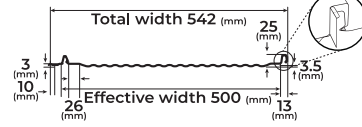
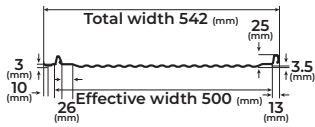
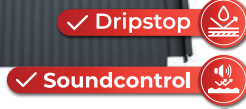
TECHNICAL CHARACTERISTICS

Material	Steel sheet zinc-plated on both sides and protected with polyester coating
Thickness	0,45 - 0,60 mm
Total width	542 mm
Usable width	500 mm
Rebate height	25 mm
Weight per area	4 - 5 kg / m ²

- Length
1-8 m
- Warranty
10 - 30 years
- Life span
60 years
- Joining
with a click



RETRO PANEL MICRO RIBS/ PLUS MICRO RIBS by BILKA®

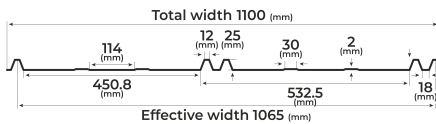
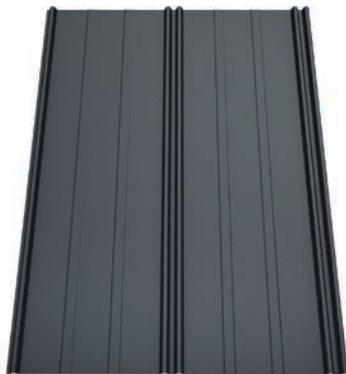


TECHNICAL CHARACTERISTICS

Material	Steel sheet zinc-plated on both sides and protected with polyester coating
Thickness	0,45 - 0,6 mm
Total width	542 mm
Usable width	500 mm
Rebate height	25 mm
Weight per area	4 - 5 kg / m ²

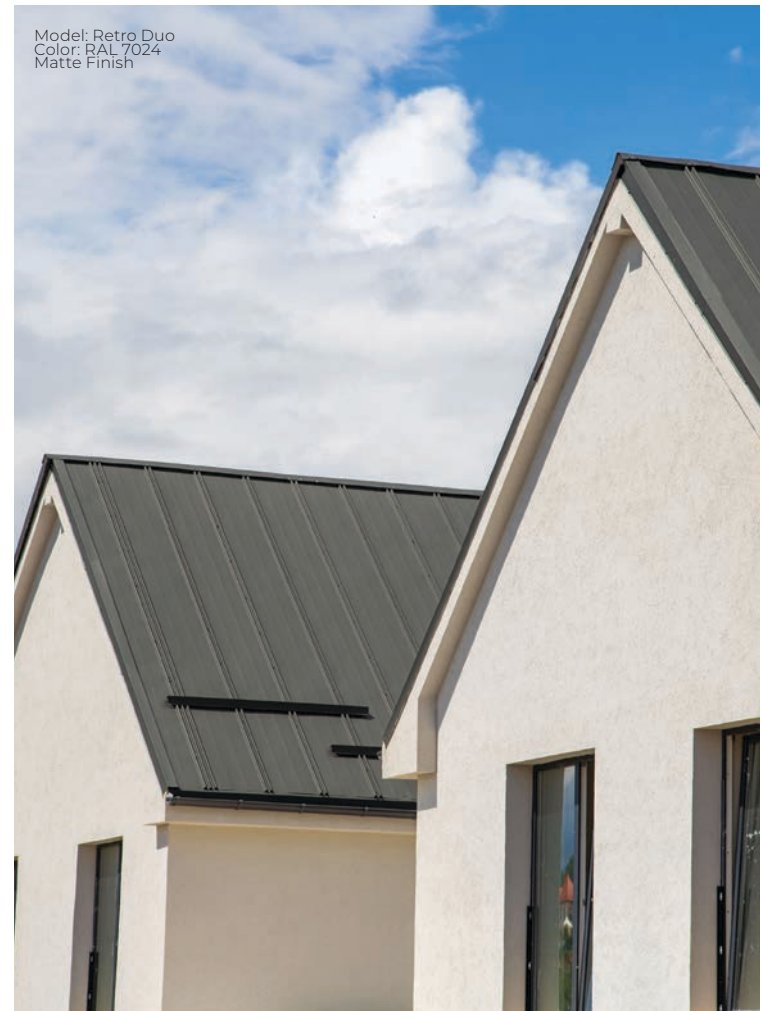
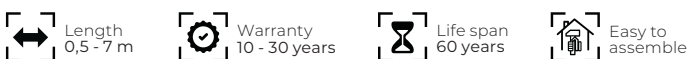


RETRO DUO by BILKA®

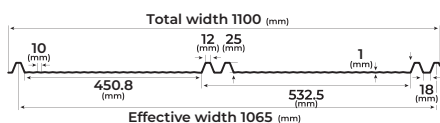


TECHNICAL CHARACTERISTICS

Material	Steel sheet zinc-plated on both sides and protected with polyester coating
Thickness	0,45 - 0,7 mm
Total width	1100 mm
Usable width	1065 mm
Total height	25 mm
Weight per area	4 - 5 kg / m ²



RETRO DUO MICRO-RIBS by **BILKA®**



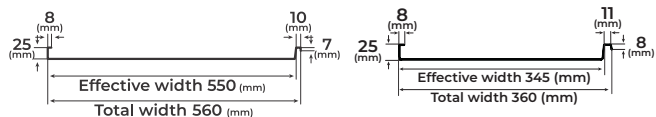
TECHNICAL CHARACTERISTICS

Material	Steel sheet zinc-plated on both sides and protected with polyester coating
Thickness	0,45 - 0,70 mm
Total width	1100 mm
Usable width	1065 mm
Total height	25 mm
Weight per area	4 - 5 kg / m ²
Length	0,5 - 7 m
Warranty	10 - 30 years
Life span	60 years
Easy to assemble	



Model: Retro Duo Micro Ribs
Color: RAL 9005
Matte Finish

FOLDED SHEET by **BILKA®**



TECHNICAL CHARACTERISTICS

Material	Steel sheet zinc-plated on both sides and protected with polyester coating
Thickness	0,45 - 0,60 mm
Total width	560 mm 360 mm
Usable width	550 mm 345 mm
Rebate height	25 mm
Weight per area	4 - 7 kg / m ²
Customizable length	
Warranty	10 - 30 years
Life span	60 years
Joining with no visible screws	

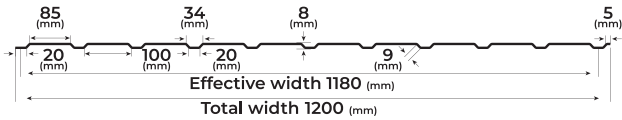


Model: Folded Sheet
Color: RAL 9005
Matte Finish

T8 by BILKA®



Model: Corrugated steel sheet T8
Color: RAL 9005
Matte Finish



TECHNICAL CHARACTERISTICS

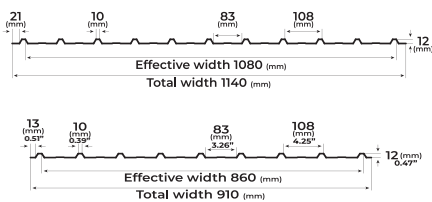
Material	Steel sheet zinc-plated on both sides and protected with polyester coating
Thickness	0,30 - 0,60 mm
Total width	1200 mm
Usable width	1180 mm
Corrugation height	8 mm
Weight per area	2 - 7 kg / m ²

-  Length 0,5 - 13,5 m
-  Warranty 5 - 30 years
-  Life span 60 years
-  Easy to assemble

T12 by BILKA®



Model: Corrugated steel sheet T12
Color: RAL 7024
Matte Finish

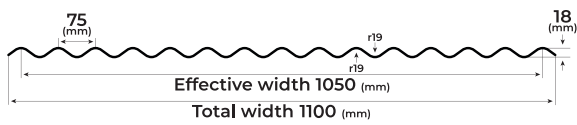


TECHNICAL CHARACTERISTICS

Material	Steel sheet zinc-plated on both sides and protected with polyester coating
Thickness	0,30 - 0,40 mm
Total width	1140 mm / 910 mm
Usable width	1080 mm / 860 mm
Corrugation height	12 mm
Weight per area	2 - 4 kg / m ²

-  Length 0,5 - 13,5 m
-  Warranty 5 years
-  Life span 60 years
-  Easy to assemble

S18 SINUS by BILKA®



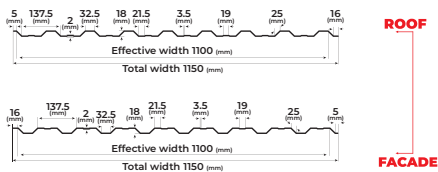
TECHNICAL CHARACTERISTICS

Material	Steel sheet zinc-plated on both sides and protected with polyester coating
Thickness	0,40 - 0,60 mm
Total width	1100 mm
Usable width	1050 mm
Height	18 mm
Weight per area	3 - 7 kg / m ²
Length	0,5 - 13,5 m
Warranty	5 - 30 years
Life span	60 years
Easy to assemble	



Model: Corrugated steel sheet S18 Sinus
Color: RAL 9002
Glossy Finish

T18 by BILKA®



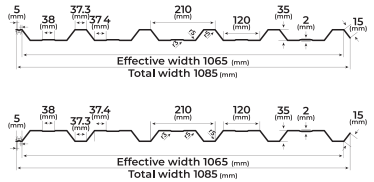
TECHNICAL CHARACTERISTICS

Material	Steel sheet zinc-plated on both sides and protected with polyester coating
Thickness	0,40 - 0,70 mm
Total width	1150 mm
Usable width	1100 mm
Corrugation height	18 mm
Weight per area	2 - 7 kg / m ²
Length	0,5 - 13,5 m
Warranty	5 - 30 years
Life span	60 years
Easy to assemble	



Model: Corrugated steel sheet T18
Color: RAL 7024
Matte Finish

T35 by BILKA®



ROOF

FACADE

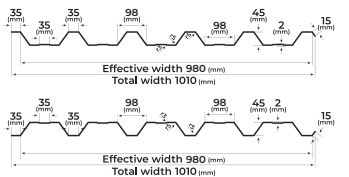
TECHNICAL CHARACTERISTICS

Material	Steel sheet zinc-plated on both sides and protected with polyester coating
Thickness	0,40 - 1,00 mm
Total width	1085 mm
Usable width	1065 ± 5 mm
Corrugation height	35 mm
Weight per area	3 - 12 kg / m ²

- Length 0,5 - 13,5 m
- Warranty 5 - 30 years
- Life span 60 years
- Easy to assemble



T45 by BILKA®



ROOF

FACADE

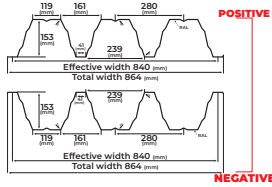
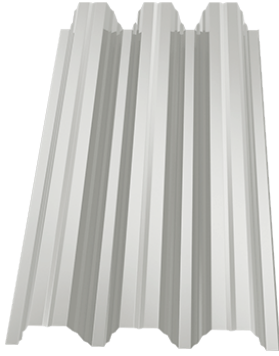
TECHNICAL CHARACTERISTICS

Material	Steel sheet zinc-plated on both sides and protected with polyester coating
Thickness	0,40 - 1,00 mm
Total width	1010 mm
Usable width	980 mm
Corrugation height	45 mm
Weight per area	3 - 12,5 kg / m ²

- Length 0,5 - 13,5 m
- Warranty 5-30 years
- Life span 60 years
- Easy to assemble



T153 by BILKA®



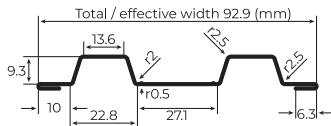
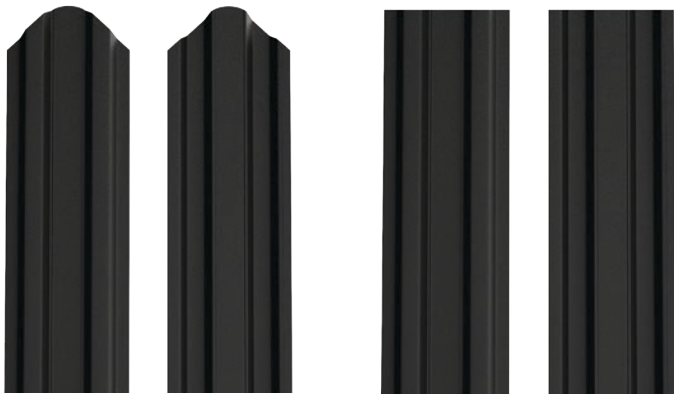
TECHNICAL CHARACTERISTICS

Material	Steel sheet zinc-plated on both sides and protected with polyester coating
Thickness	0,75 - 1,25 mm
Total width	864 mm
Usable width	840 mm
Corrugation height	153 mm
Weight per area	10,65 - 17,70 kg / m ²

- Length
2-15 m
- Warranty
10 years
- Life span
60 years
- Easy to assemble



OSLO METAL FENCE SLATS by BILKA®



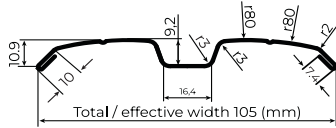
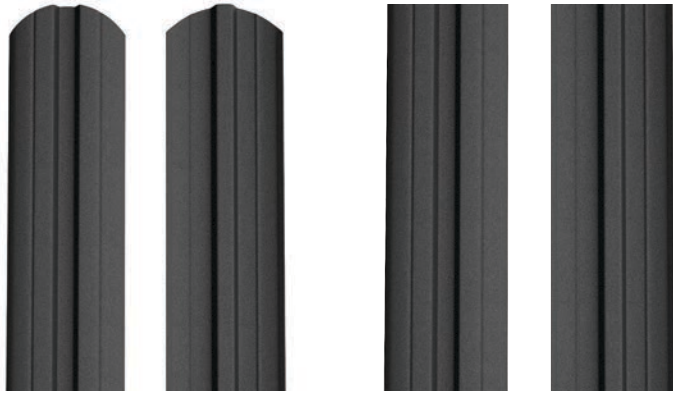
TECHNICAL CHARACTERISTICS

Thickness	One side painted steel 0,40 mm - 0,60 mm Double-painted steel 0,60 / 0,40 mm
Total/usable width	92,9 mm
Rebate height	9,3 mm
Production lengths	0,8 - 2,5 m
Production possibilities	Round ended Straight ended

- Length
0.8 - 2.5 m
- Warranty
5-30 years
- Life span
60 years
- Easy to assemble



BERNA METAL FENCE SLATS by BILKA®



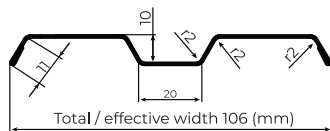
TECHNICAL CHARACTERISTICS

Thickness	One side painted steel 0,40 mm - 0,50 mm Double-painted steel 0,60 / 0,40 mm
Total/usable width	105 mm
Rebate height	9,2 mm
Production lengths	0,8 - 2,5 m
Production possibilities	Round ended Straight ended
Length	0,8 - 2,5 m
Warranty	5-30 years
Life span	60 years
Easy to assemble	



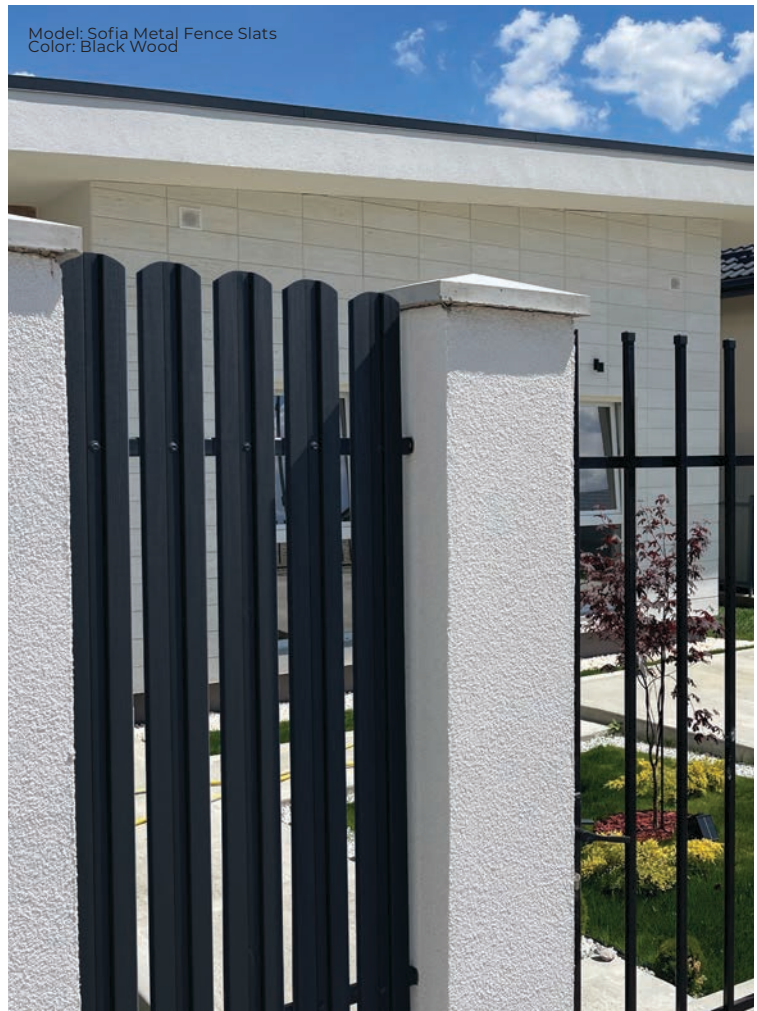
Model: Berna Metal Fence Slats
Color: RAL 7024
Matte Finish

SOFIA METAL FENCE SLATS by BILKA®



TECHNICAL CHARACTERISTICS

Thickness	One side painted steel 0,40 mm - 0,50 mm Double-painted steel 0,60 / 0,40 mm
Total/usable width	106 mm
Rebate height	10 mm
Production lengths	0,8 - 2,5 m
Production possibilities	Round ended Straight ended
Length	0,8 - 2,5 m
Warranty	5-30 years
Life span	60 years
Easy to assemble	



Model: Sofia Metal Fence Slats
Color: Black Wood



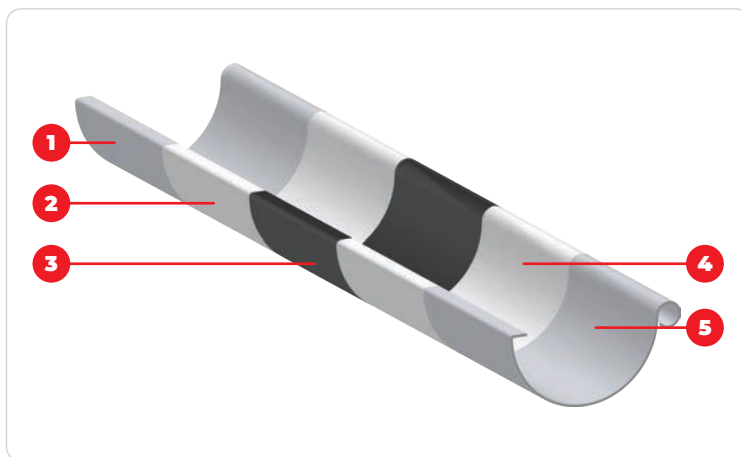
BILKA gutter system is made of hot galvanized steel and protected on both sides with multilayers for a perfect behavior in time. The mix of elements is simple, fast and efficient, does not allow water to run off the facade or infiltration in the foundation and walls of the house, thus protecting the whole building ensuring a higher lifetime.

The production of BILKA system elements is based on Swedish technology, since it uses the Swedish steel of the highest quality (0.6 mm), galvanized on both sides (275 g/sqm), and covered with polymer paint.

- The coating layer gives the products a special surface smoothness, high color stability, and strong resistance to rainwater and atmospheric pollutants.

The five layers applied to the metal band provide resistance to corrosion for each component and ensure an extended lifespan.

This is why BILKA system provides a long resistance guarantee over time and the only maintenance operation required is the cleaning of gutters.



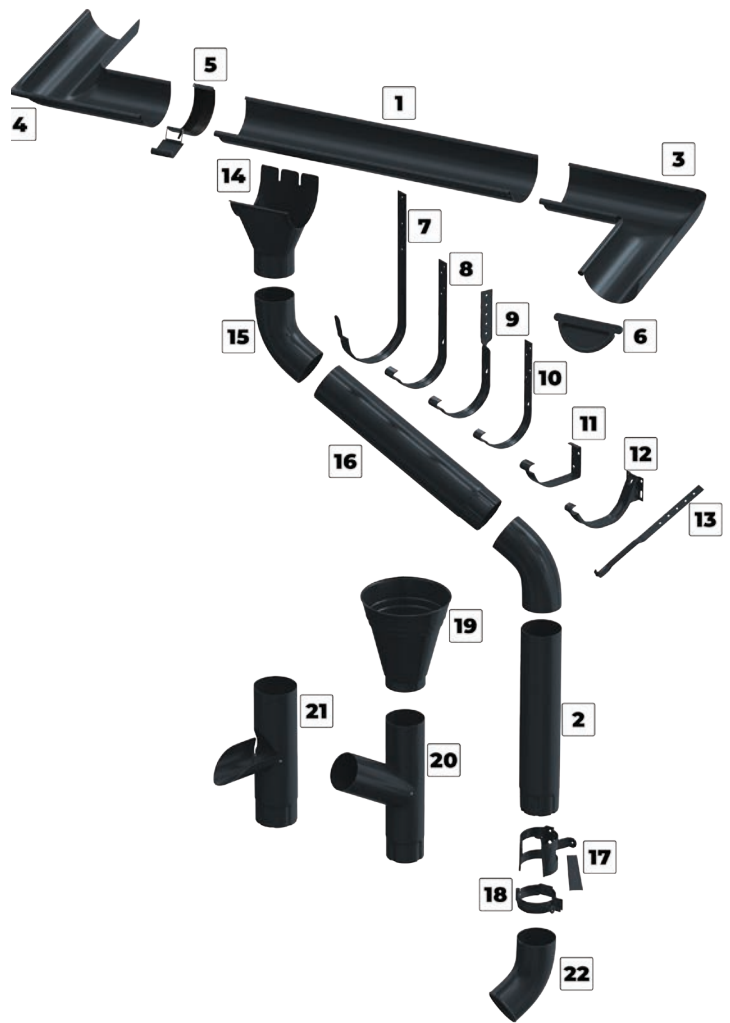
1	2	3	4	5
Steel	Zinc layer	Primer layer	Passivation layer	Paint layer

Parameter	Value - Glossy finish	Value - Matte finish	Standard
Use	Exterior	Exterior	-
Thickness of the surface	35 µm / 35 µm	40 µm / 40 µm	ISO 2808
Surface thickness tolerance	6 µm	6 µm	EN 10169-1
Varnish	40	<5	EN 13523-2
The minimum internal radius bend	0.5 x t	0.5 x t	EN 13523-7
Minimum formation temperature	-15°C	-15°C	-
Scratch resistance	35N	30N	EN 13523-5
Stain resistance	very good	very good	-
Maximum working temperature	+100°C	+100°C	-
UV Category	RUV3	RUV4	prEN 10169-2
Corrosion resistance category	RC5	RC5	prEN 10169-2
Zinc coating	275 g/m ²	275 g/m ²	-



GUTTER SYSTEM Elements

by **BILKA**



The gutter system referred to as controlled discharge stormwater system from the roof or rainwater collection and drainage system, as the name implies, is designed to take water from the roof and direct it to the sewer system.

- BILKA gutter system is made of hot galvanized steel and protected on both sides with multilayers for a perfect behavior in time.

The mix of elements is simple, fast and efficient, does not allow water to run off the facade or infiltration in the foundation and walls of the house, thus protecting the whole building ensuring a higher lifetime.

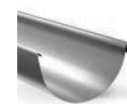
BILKA gutter system is available in two-dimensional groups, 150/100, 125/90, in 19 color options.

- The size and color options enable achievement of the appropriate individual combinations and to match the roof color.

Double-sided coated steel



Double-sided coated matte steel



MAGNELIS



Disclaimer: Color shades may differ from the real ones. In order to be sure, do not hesitate to ask the color chart from the BILKA representative.

1



Gutter
 Section
 150 mm | 125 mm
 Length
 2000 mm | 4000 mm

2



Downpipe
 Section
 100 mm | 90 mm
 Length
 3000 mm

3



Internal Corner
 Section
 150 mm | 125 mm
 Angle
 90°

4



External Corner
 Section
 150 mm | 125 mm
 Unghi
 90°

5



Gutter Joining Element
 Section
 150 mm | 125 mm

6



Gutter Stop End
 Section
 150 mm | 125 mm

7



Gutter Hook 300
 Section
 150 mm
 Length
 300 mm

8



Gutter Hook 210
 Section
 150 mm | 125 mm
 Length
 210 mm

9



Twisted Hook
 Section
 150 mm | 125 mm

10



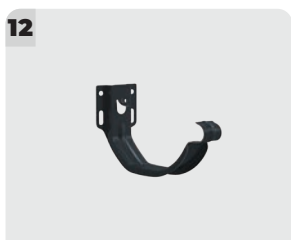
Gutter Hook 160
 Section
 150 mm | 125 mm
 Length
 160 mm

11




Combi Hook
 Section
 150 mm | 125 mm

12



Adjustable Hook
 Section
 150 mm | 125 mm

13



Gutter Flange
 Section
 150 mm | 125 mm
 Length
 210 mm

14



Running Outlet
 Section
 150 mm | 100 mm
 125 mm | 90 mm

15




60° Elbow
 Section
 100 mm | 90 mm

16



Downpipe Connector
 Section
 100 mm | 90 mm
 Length
 1000 mm

17



Downpipe Clamps
 Section
 100 mm | 90 mm

18



Downpipe Bracelet
 Section
 100 mm | 90 mm

19



Funnel
 Section
 100 mm | 90 mm

20



Branch Pipe
 Section
 100 mm | 90 mm

21




Drain Branch
 Section
 100 mm | 90 mm

22



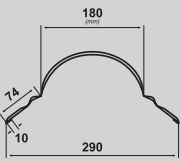
Discharge Elbow
 Section
 100 mm | 90 mm

1




LARGE SEMICIRCULAR RIDGE

It closes the roof to the top at the intersection of two slopes, acting as a shield against seepage.



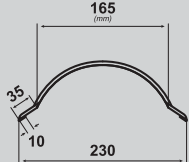
Technical drawing showing a cross-section of the ridge with dimensions: 180 (mm) width, 290 (mm) base, 7.2 (mm) height, and 10 (mm) thickness.

2




SMALL SEMICIRCULAR RIDGE

The alternative for the large ridge, it closes the roof to the top at the intersection of two slopes, acting as a shield against seepage.



Technical drawing showing a cross-section of the ridge with dimensions: 165 (mm) width, 230 (mm) base, 3.5 (mm) height, and 10 (mm) thickness.


3



RIDGE CLOSURE

It seals and at the same time prevents the birds' access.

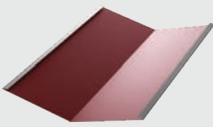
4



RIDGE CAP

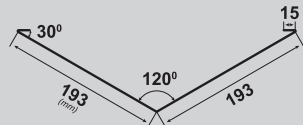
It seals and at the same time prevents the birds' access.

5



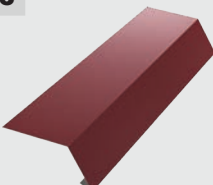
VALLEY

It is mounted under the cover at the junction of two slopes and it directs the water towards the gutter system.



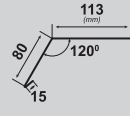
Technical drawing showing a cross-section of the valley with dimensions: 30° angle, 120° angle, 193 (mm) length, and 15 (mm) height.

6



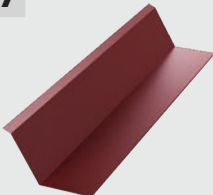
RAIN SHADOW BORDER

It connects to the drainage system allowing water to drain from the cover to the gutter.



Technical drawing showing a cross-section of the border with dimensions: 113 (mm) width, 80 (mm) height, 15 (mm) thickness, and 120° angle.

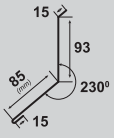
7



WALL BORDER

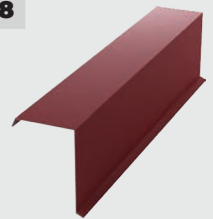
It is used at the intersection of the slopes with fire walls, dividing walls.

It prevents water to seep on the wall.



Technical drawing showing a cross-section of the border with dimensions: 15 (mm) height, 93 (mm) length, 85 (mm) width, and 230° angle.

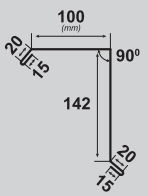
8



GABLE BORDER

It closes the sides of the roof covering the roof structure edges.

It is assembled over the fascia board, after the fastening of the tile plates.



Technical drawing showing a cross-section of the border with dimensions: 100 (mm) width, 142 (mm) height, 90° angle, and 20 (mm) thickness.

9



GABLE BORDER UNDER THE TILE

It closes the sides of the roof and is assembled over the fascia board, before the fastening of the tile plates.



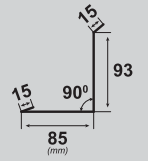
Technical drawing showing a cross-section of the border with dimensions: 15 (mm) height, 40 (mm) width, 85 (mm) length, 142 (mm) height, and 15 (mm) thickness.

10



FASTENING PLATES ONTO THE WALL

It is used at the intersection of one slope with a wall and prevents water to seep on the wall.



Technical drawing showing a cross-section of the plate with dimensions: 15 (mm) height, 93 (mm) length, 85 (mm) width, and 90° angle.

11

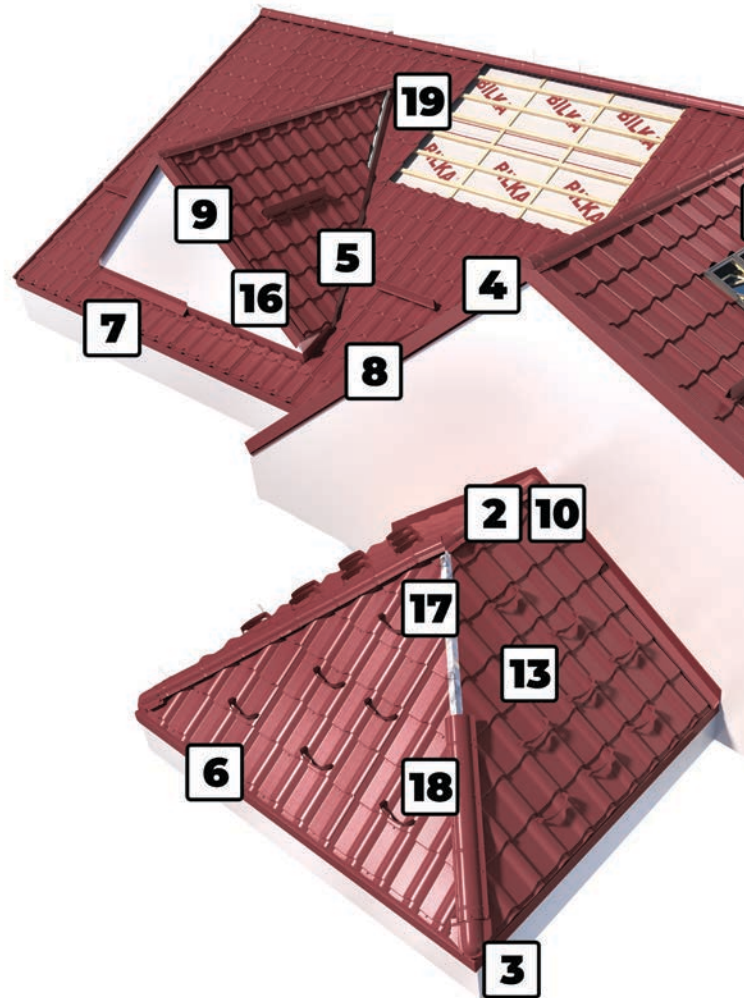


CONVEX SLOPE BREAKING

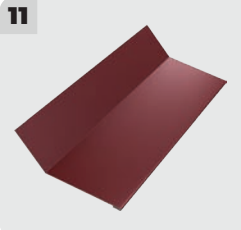
It is used in areas where roof slopes change their pitch.



Technical drawing showing a cross-section of the plate with dimensions: 15 (mm) height, 80 (mm) length, 15 (mm) thickness, and 140 (mm) width.



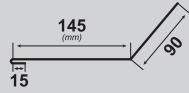
Any other sheet-metal works are available upon request. For details, please do not hesitate to contact your BILKA representative.



11

CONCAVE SLOPE BREAKING

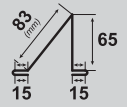
It is used in areas where roof slopes change their pitch.



12

SNOW STOPPER

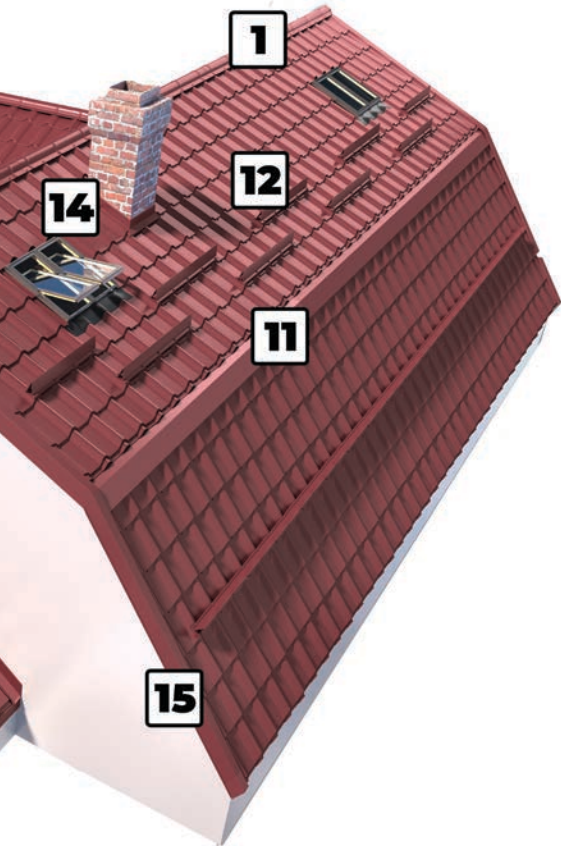
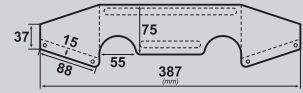
It is assembled on the cover and prevents snow slides off the roof.



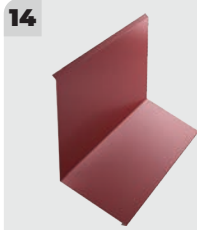
13

OMEGA SNOW STOPPERS

It is an alternative to conventional snow stoppers.



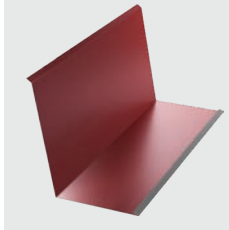
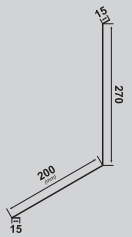
METAL TILE ACCESSORIES



14

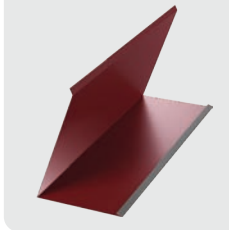
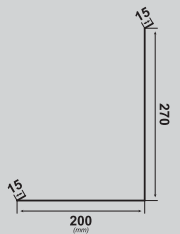
FRONT PIECE FUNNEL SET

It is mounted at the base of the funnel and it prevents water to seep in along the funnel walls.



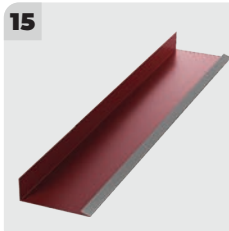
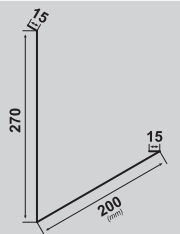
SIDE PIECE FUNNEL SET

It is mounted at the base of the funnel and it prevents water to seep in along the funnel walls.



REAR PIECE FUNNEL SET

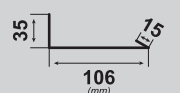
It is mounted at the base of the funnel and it prevents water to seep in along the funnel walls.



15

UNDER GABLE FLASHING

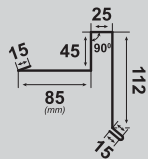
This element is used to prevent water infiltration if the eaves are not positioned at right angles to the gable line.



16

VERGE TRIM

Verge trims are mounted on the sides of the roof in order to protect the structure against rain and wind.



17

BITUMEN TAPE

Flexible self-adhesive waterproofing tape recommended for insulation and anti-moisture protection.



18

UNIVERSAL SEALING TAPE

It is used on the valley and under the ridge. It has a sealing role.

PROFILED SEALING TAPE

It has a sealing role. It is profiled in the shape of the model. It is applied perfectly under the ridge and on the rain shadow border.

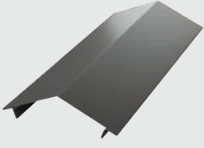


19

WOODSCREW

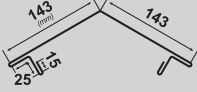
It fastens the sheet plates and accessories on the wood lath.

1



RETRO RIDGE

It closes the roof to the top at the intersection of two slopes, acting as a shield against seepage.



2



RETRO HALF-RIDGE

It closes the roof at the top and prevents seepage under the cover. It is used for one slope roofs.



3

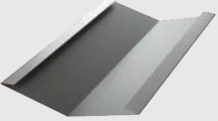


RIDGE SUPPORT

It is mounted under the angular ridge in order to facilitate and mask the ridge fastening points.

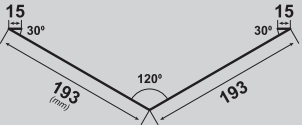


4

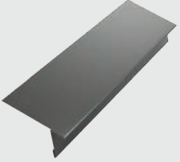


VALLEY

It is mounted under the cover at the junction of two slopes and it directs the water towards the gutter system.

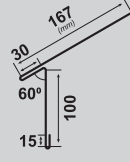


5




LARGE RAIN SHADOW BORDER

It connects to the drainage system allowing water to drain from the cover to the gutter.



6

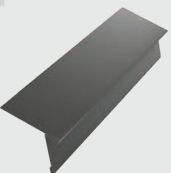


BIG OVERLAPPING ELEMENT

It is used at the junction of the Retro Panel panel with the slope breaking.



7

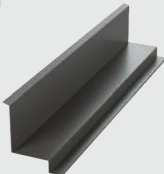


SMALL RAIN SHADOW BORDER

It connects to the drainage system allowing water to drain from the cover to the gutter.

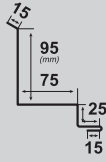


8




RETRO SIDEWALL BORDER

It is used at the intersection of the slopes with fire walls, dividing walls. It prevents water to seep on the wall.

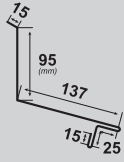


9

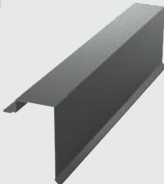


HORIZONTAL WALL BORDER

It is used at the intersection of the slopes with fire walls, dividing walls. It prevents water to seep on the wall.

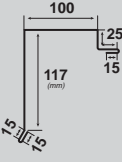


10




GABLE BORDER

It closes the sides of the roof covering the roof structure edges. It is assembled over the fascia board, after the fastening of the tile plates.

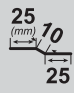
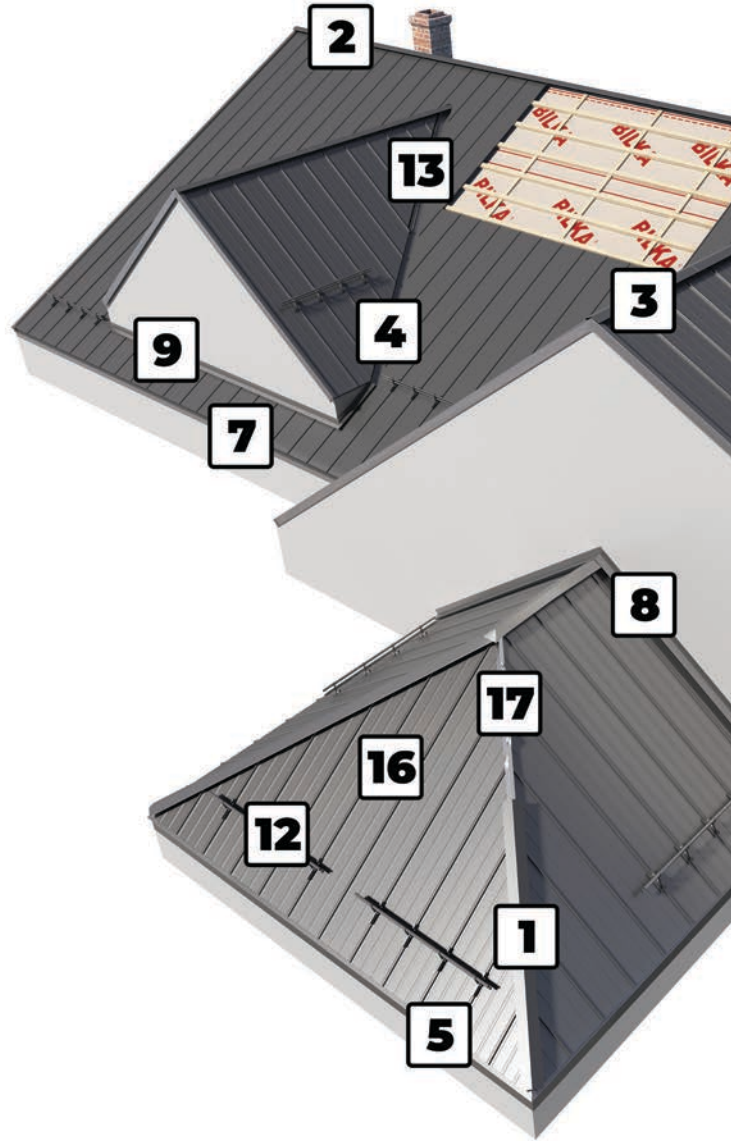


11



SMALL OVERLAPPING ELEMENT

It is used to join two Retro Panel sheets if the roof is longer and requires the use of two panels.

Any other sheet-metal works are available upon request. For details, please do not hesitate to contact your BILKA representative.

12



SNOW STOPPER

It is assembled on the cover and prevents snow slides off the roof.

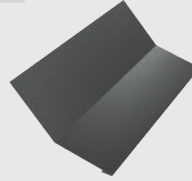
13



UNIVERSAL SEALING TAPE

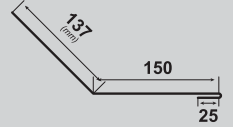
It is used on the valley and under the ridge. It has a sealing role.

14

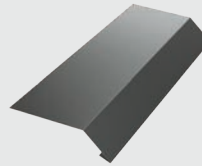


CONCAVE SLOPE BREAKING

It is used in areas where roof slopes change their pitch.

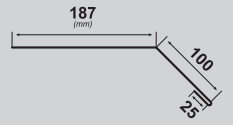


14



CONVEX SLOPE BREAKING

It is used in areas where roof slopes change their pitch.

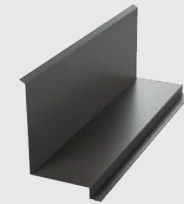
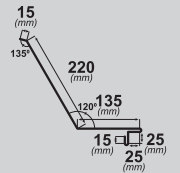


15



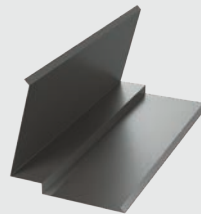
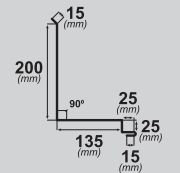
FRONT PIECE FUNNEL SET

It is mounted at the base of the funnel and it prevents water to seep in along the funnel walls.



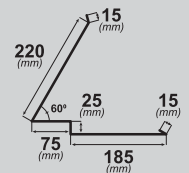
SIDE PIECE FUNNEL SET

It is mounted at the base of the funnel and it prevents water to seep in along the funnel walls.



REAR PIECE FUNNEL SET

It is mounted at the base of the funnel and it prevents water to seep in along the funnel walls.



16



WOODSCREW

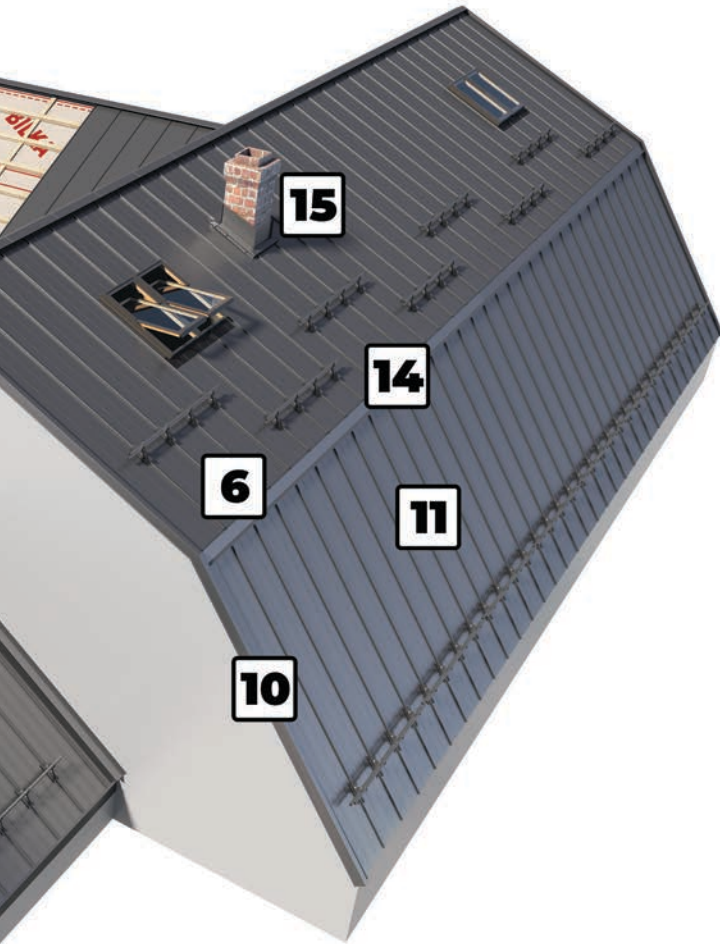
It fastens the sheet plates and accessories on the wood lath.

17



BUTYL TAPE

Flexible self-adhesive waterproofing tape recommended for insulation and anti-moisture protection.



RETRO PANEL ACCESSORIES



ANTICONDENSATION FOIL

The anti-condensation foil lets vapors out but does not let moisture in, thanks to its two sides that provide additional protection for the roof. An anti-condensation foil protects the roof boarding, rafters and the thermal insulation material against possible water seepage that could get under the cover and facilitates the guiding of such seepage towards the gutters.

Likewise, a well-mounted anti-condensation film offers additional protection against dust.

This way, you will be protected against respiratory problems that could occur in its absence, from asthma to different types of allergies.

Depending on the roof type and the specialist's recommendation, you can choose from six BILKA foil types:

BILKA 95 g Foil

Diffusion roof foil, in the economic category, three layered: one special diffusion membrane between two layers of polypropylene. No need for ventilation layer between the foil and the thermal insulation.

TECHNICAL CHARACTERISTICS	Specific weight	Tensile strength	Temperature range	Watertightness Vapour permeability
	95 g/m ² ± 11%	140 N/50mm (+30;-30) / 65 N/50mm (+15;-15)	-30 : 80°C	W1, Sd 0,02m (+0,02;-0,01)

BILKA 120 g Foil

It is a diffusion foil under the covering for a simple ventilated roof. It is assembled freely hanging, directly on the rafters or on the roof boarding in roofs with a slope above 25 degrees, for normal thermal loads.

TECHNICAL CHARACTERISTICS	Specific weight	Tensile strength	Temperature range	Watertightness Vapour permeability
	120 g/m ² ± 11%	190 N/50mm (+50;-50) / 100 N/50mm (+30;-30)	-30 : 80°C	W1, Sd 0,02m (+0,03;-0,01)

BILKA 140 g Foil

Modern diffusion foil under the covering, preventing the most frequent execution errors. Thanks to its breathability, it does not require any ventilation duct between the foil and insulation. Thus, no air currents are generated, increasing the efficiency of the insulation. The middle membrane of the three-layer foil provides breathability and successfully evacuates water from the surface.

TECHNICAL CHARACTERISTICS	Specific weight	Tensile strength	Temperature range	Watertightness Vapour permeability
	140 g/m ² ± 11%	230 N/50mm (+60;-60) / 120 N/50mm (+30;-30)	-30 : 80°C	W1, Sd 0,02m (+0,03;-0,01)

BILKA 150 g Foil

Modern diffusion foil under the cover. Thanks to its breathability, it does not require any ventilation duct between the foil and insulation. Thus, no air currents are generated, increasing the efficiency of the insulation. The middle membrane of the three-layer foil provides breathability and successfully evacuates water from the surface.

TECHNICAL CHARACTERISTICS	Specific weight	Tensile strength	Temperature range	Watertightness Vapour permeability
	150 g/m ² ± 11%	240 N/50mm (+50;-50) / 130 N/50mm (+30;-30)	-30 : 80°C	W1, Sd 0,02m (+0,03;-0,01)

BILKA 180 g Foil

BILKA Foil 180g is diffuse-open membrane designed as house wrap, which goes under the external roofing. Membrane is totally waterproof, protects thermal insulation against rain or snow from the outside and also it is an excellent wind barrier.

TECHNICAL CHARACTERISTICS	Specific weight	Tensile strength	Temperature range	Watertightness Vapour permeability
	180 g/m ² ± 11%	270 N/50mm (+60;-60) / 140 N/50mm (+35;-35)	-30 : 80°C	W1, Sd 0,02m (+0,04;-0,01)

BILKA 200 g Foil

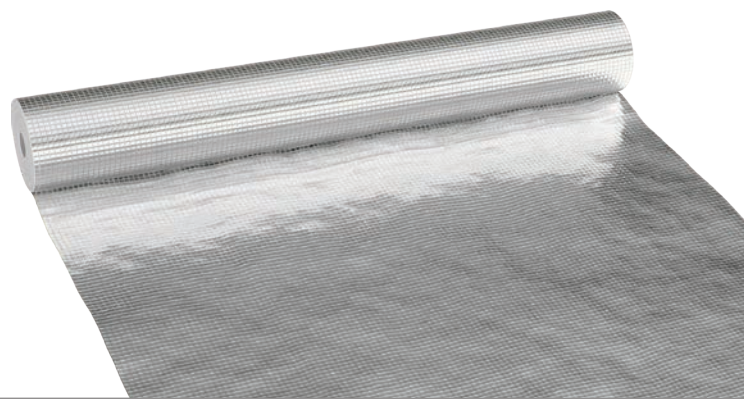
Bilka 200 g foil is a totally waterproof membrane, protects thermal insulation against rain or snow from the outside and it is also an excellent wind barrier. The product can be used for all ventilated or non ventilated roofs, under a variety of roofing materials ensuring vapour permeability and successfully removing water from the surface.

TECHNICAL CHARACTERISTICS	Specific weight	Tensile strength	Temperature range	Watertightness Vapour permeability
	200 g/m ² ± 11%	300 (+60;-60) / 160 (+50;-50) N/50mm	-30 : 80°C	W1, Sd 0,04m (+0,02;-0,02)

BILKA AntiDrop 100 Foil

A waterproof membrane made of a waterproof material, and is designed to be used as a vapour control layer in walls or roofs. The foil is recommended for non-mansard roofs, and provides protection against possible water infiltrations or dust. It is recommended to be installed freely on rafters.

TECHNICAL CHARACTERISTICS	Specific weight	Tensile strength	Resistance to tearing	Watertightness Vapour permeability	Temperature range
	100 g/m ² ± 10%	≥150 N/50mm / ≥80 N/50mm	≥110N / ≥110N	W1 Sd 8 m (+2;-2)	-30 : 80°C



VAPOR-BARRIER FOIL

BILKA ALU 90 film

BILKA ALU 90 Foil is a multilayer film consisting of one layer of metallized polypropylene film, polypropylene mesh and polyethylene film. The BILKA ALU 90 Foil is designed to perform vapor barrier in the construction of roofs. The metallised layer reflects thermal radiation, preventing heat loss. Product is insulating barrier to water vapor and the wind. Such membranes can be used in all ventilated and non-ventilated roofs.

TECHNICAL CHARACTERISTICS	Specific weight	Resistance to tearing	Temperature range	Water vapour transmission
	90 g/m ² ± 10%	≥100N	-30; 70°C	Sd 50m ± 30%

BILKA ALU 150 film

BILKA ALU 150 Foil is a multilayer film consisting of one layer of metallized polypropylene film, polypropylene mesh and polyethylene film. The BILKA ALU 150 Foil is designed to perform vapor barrier in the construction of roofs. The metallised layer reflects thermal radiation, preventing heat loss. Product is insulating barrier to water vapor and the wind. Such membranes can be used in all ventilated and non-ventilated roofs.

TECHNICAL CHARACTERISTICS	Specific weight	Resistance to tearing	Temperature range	Water vapour transmission
	150 g/m ² ± 10%	≥150N	-30; 70°C	Sd 70m ± 30%

AUXILIARY ACCESSORIES

In addition to the standard products for roofs, BILKA also provides its customers with auxiliary products to help them achieve a high-quality installation. A complete and durable roof includes, in addition to the required basic elements such as metallic tiles and the rainwater system, secondary elements that complete and ensure a durable installation.

COMB VENT FOR RAINSHADOW



Technical details:

- Length: 1 m
- Color: brown

The eaves comb is installed under the roofing, along the eaves line, in order to ensure the ventilation of the roof, but also to protect it against birds or large insects. The product follows the internal contour of the tile and is fastened using screws or nails.

COMB VENT FOR VENTILATION

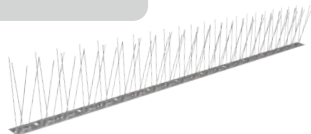


Technical details:

- Length: 1 m
- Color: brown

The vent comb with ventilation is designed to allow air to enter for ventilation, but also to prevent access of birds or large insects under the roofing. It is installed along the eaves line, following the internal contour of the tile.

BIRD SPIKES



Technical details:

- Metallic support
- Length: 1000 mm

This product is used to prevent birds from nesting, thus eliminating the risk of corrosion on the various surfaces of the roof, but also the risk of contamination with different parasites.

EAVES VENTILATION STRIP

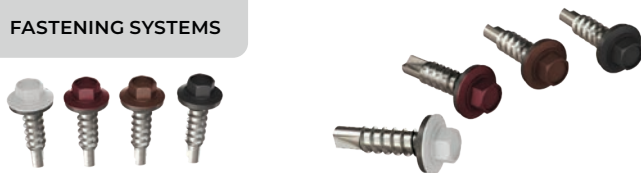


Technical details:

- Width: 100 mm
- Color: brown

The eaves vent strip is designed to allow air to enter for ventilation, but also to prevent access for birds or large insects under the roofing. It is installed along the eaves line.

FASTENING SYSTEMS



RETOUCH SPRAY



PAINT CORRECTOR

It is an auxiliary product that can be used in areas where the sheet metal was cut or scratched in order to keep the shade of the tile even. This is a retouch paint and is available in the shades sold by BILKA.

PREMIUM MASTIC SEALANT



UNIVERSAL MASTIC SEALANT

PREMIUM MASTIC SEALANT
Premium silicone as roof sealant, Hybrid Polymer with Zinc, to help the metallic tile roof to withstand the weather conditions it is subjected to.

The silicone sealant is also used to seal the gutter system.

UNIVERSAL MASTIC SEALANT
Silicone as roof sealant to help the metallic tile roof to withstand the weather conditions it is subjected to.

The silicone sealant is also used to seal the gutter system.

RIDGE BAND



Technical details:

- Color: **Grey**, (RAL7024), **Copper brown** (RAL8004), **Brown** (RAL8017), **Black** (RAL9005)
- Length: 5000 mm
- Requirement per linear meter: 1 roll / 5 lm
- Width : 310 mm, 230 mm

Vapor-permeable rigid strip consisting of two corrugated aluminum strips connected by a high-resistance geotextile fabric

The butyl adhesive tapes running along the entire length of the rigid sides of the product are designed to provide durable fastening.

Other properties:

- Allows the efficient venting of the roof;
- Prevents precipitations and birds/insects from entering under the roofing;
- The corrugated surface and adhesive tapes ensure easy installation on any type of roofing.

BILKA fastening systems are protected with anti-rust layers, removing thus the risk of corrosion on the metal cladding applied to the building.

Depending on the work, self-drilling screws for the roof can be chosen, panels and other metal construction with mounting on wood or metal.

- Screws are available in different RAL colors.

Dimension (D×L mm)	Drilling capacity(mm)	Hexagon head (mm)	Use
4,8×19	3	8	Metal fastening on metallic support
4,8×35	3	8	Metal fastening on metallic support
4,8×35	2,5	8	Metal fastening on wooden support
4,8×55	2,5	8	Metal fastening on wooden support
4,8×70	2,5	8	Metal fastening on wooden support
4,8×20	2,5	8	Steel plate joining
5,5×60, 5,5×80, 5,5×100, 5,5×120	5	8	Insulating panels fastening on metal support
5,5×140, 5,5×70, 5,5×90, 5,5×110, 5,5×130, 5,5×150, 5,5×190, 5,5×220, 5,5×250	12	8	Insulating panels fastening on metal support



SHIPPING, HANDLING, STORAGE



STORAGE:

1. Horizontally, on pallets, protected against moisture.
2. AWAY FROM heat sources and corrosive materials.
3. Avoid contact with wet cement, acids, mortar, lime, earth, copper, other aggressive materials or fluids, etc.
4. Pallet stacking must consider the weight of each pallet in turn. Avoid placing the base of the upper pallet on the pressed area of the product stored in the pallet below.
5. The storage period must not exceed 45 days. It is required to store the elements of the roofing system indoors, in dry and wellventilated locations, removed from the package and placed on a wooden bed/support, with sufficient space between them, for a proper ventilation.

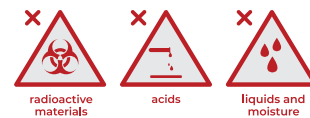
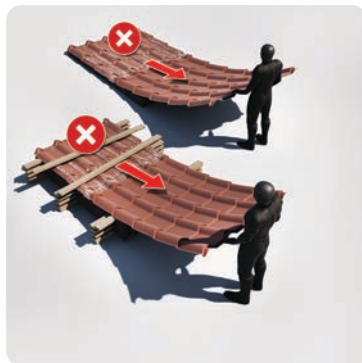
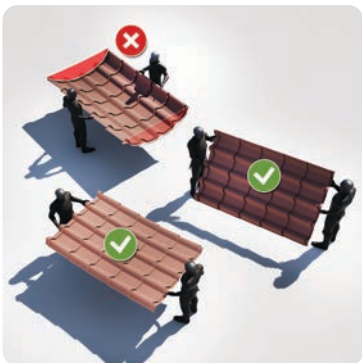
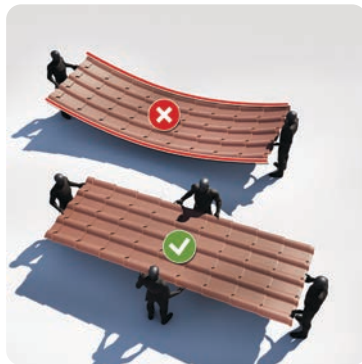
* **Zink-coated metal sheets** must be stored indoors, in a dry and ventilated area, removed from the package and placed on a wooden bed/support, with sufficient space between them, for a proper ventilation. The storage period must not exceed 10 days.

SHIPPING AND HANDLING:

1. Bilka products are delivered fast, all over Europe, thanks to the high production capacity, advanced logistics system and good relations with the domestic partners.
2. BILKA roofs are executed in different sizes depending on the customer's needs so as to minimize material losses and they are delivered on wood pallets, which are easily handled using cranes and forklifts.
3. For the manual handling of the metal roofing panels, the panels must be held from the edges so as to prevent their deformation.
4. Products **MUST NOT** be moved by dragging. The panels must be handled vertically, by at least 2 persons.

WARNING:

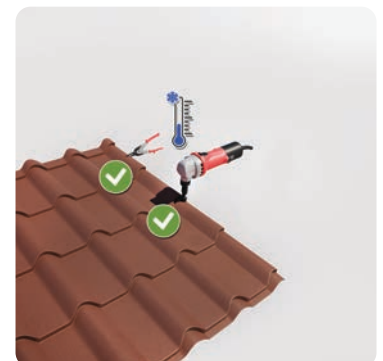
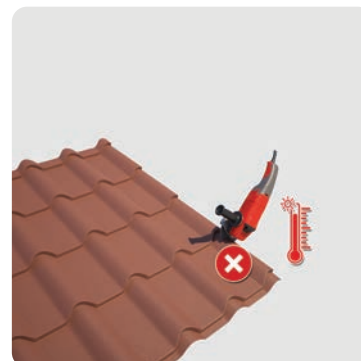
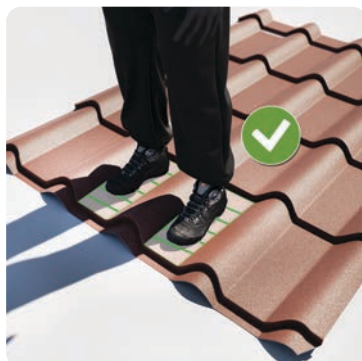
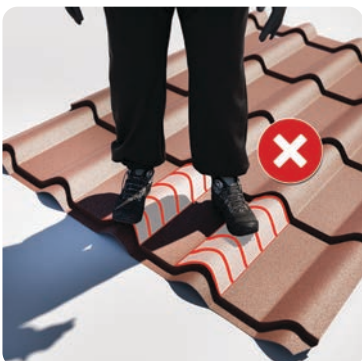
Failing to observe the cutting, transport, handling and storage rules will result in the loss of the product warranty.



STEPPING ON THE ASSEMBLED METAL ROOF IS ALLOWED ONLY ON THE AREAS BETWEEN THE CORRUGATED PARTS OF THE METAL PANEL.

METAL ROOFING PANELS MUST BE CUT EXCLUSIVELY WITH POWER SHEARS.

THE USE OF POWER GRINDERS IS FORBIDDEN.



BILKA
• roof system • rain system •

S.C. BILKA STEEL S.R.L.
Braşov, Str. Henri Coandă Nr. 17
Tel: 0733.30.30.30 | office@bilka.ro

WARRANTY CERTIFICATE

BILKA STEEL hereby guarantees that the products subject matter of this certificate are manufactured and certified by the manufacturer in accordance with the applicable standards and parameters, and that they comply with the European quality standards. The warranty is granted pursuant to Law No. 140/2021.

The guarantee granted by BILKA STEEL for **COLOR** and **CORROSION** characteristics is:

- 30 YEARS WARRANTY for steel sheet products with **GrandMat** finishing
- 15 YEARS WARRANTY for steel sheet products with **Matte / Wood** finishing
- 10 YEARS WARRANTY for steel sheet products with **Glossy** finishing
- 5 YEARS WARRANTY for 0.4 mm thick steel sheet products with **Glossy** finishing
- 20 YEARS WARRANTY
- 15 YEARS WARRANTY
- 10 YEARS WARRANTY

BILKA
• roof system • rain system •

GENERAL WARRANTY TERMS AND CONDITIONS

ESTIMATED LIFESPAN 60 YEARS

The warranty covers the products delivered by BILKA STEEL. BILKA STEEL shall not be held liable for any direct or indirect damages as a result of the facts or omissions below:

- The products have been chemically damaged in a corrosive environment or because of the prolonged contact with other materials: wet concrete, copper, mortar, soil, paint, acids, bird droppings.
- The products have been subject to mechanical or other kind of changes due to inadequate transport, handling or storage (unless BILKA STEEL is liable for such events).
- The pre-painted BILKA STEEL products have been cut with abrasive blades or other cutting tools that cause excessive local heating of the processed parts.
- The BILKA STEEL products have been machined at a working temperature below -10 degrees C, when machine bending has been used.
- The BILKA STEEL products have been tooled at a working temperature below +5 degrees C, when manual bending has been used.
- During the storage period, the products have been in direct contact with wet concrete, copper, soil, heat, other corrosive materials or in permanent or prolonged contact with water.
- During the use period, direct contact with wet concrete, copper, or other corrosive materials has not been prevented.
- The BILKA STEEL products have not been installed in maximum 45 days since their acquisition.
- The guarantee does not cover product damages caused by the failure to use the accessories recommended and supplied by BILKA STEEL, or because of the faulty assembly, and/or failure to follow the assembly instructions provided by the manufacturer.
- The guarantee does not cover product damages caused by the incorrect use of the retouch spray/scratch paint corrector.
- The guarantee does not cover damages arising from events of force majeure, such as: war, riot, natural disasters, fire, etc.

GENERAL WARRANTY TERMS & CONDITIONS

The warranty covers the products delivered by BILKA STEEL.

BILKA STEEL shall not be held liable for any direct or indirect damages as a result of the facts or omissions below:

- The products have been chemically affected in a corrosive environment or due to prolonged contact with other materials, for example: wet concrete, copper, mortar, soil, paint, lime, acids, bird droppings, moss, fertilizer, or animal waste, an atmosphere with high ammonia content or high salt concentration, etc.
- The products have been subject to mechanical or other kind of changes due to inadequate transport, handling or storage (unless BILKA STEEL is liable for such events).
- The pre-painted BILKA STEEL products have been cut with abrasive blades or other cutting tools that cause excessive local heating of the processed parts.
- The BILKA STEEL products have been machined at a working temperature below -10 degrees C, when machine bending has been used.
- The BILKA STEEL products have been tooled at a working temperature below +5 degrees C, when manual bending has been used.
- During the storage and mounting period, the products have been in direct contact with wet concrete, copper, soil, other corrosive materials or in permanent or prolonged contact with water.
- During the use period, direct contact with wet concrete, copper, or other corrosive materials has not been prevented.
- The BILKA STEEL products have not been installed in 45 days since their acquisition.
- The warranty does not cover product damages because of the beneficiary's failure to use the accessories recommended and supplied by BILKA STEEL, or because of the faulty assembly.
- The guarantee does not cover product damages caused by the incorrect use of the retouch spray.
- The warranty does not cover damages arising from events of force majeure, such as: war, riot, natural disasters, fire, etc.
- The beneficiary shall lose its rights to warranty if, upon the notification of a defect of the BILKA STEEL products, it fails to provide the original invoice related to the purchase of the goods.

BILKA
• roof system • rain system •

S.C. BILKA STEEL S.R.L.
Braşov, Str. Henri Coandă Nr. 17
Tel: 0733.30.30.30 | office@bilka.ro

WARRANTY CERTIFICATE

BILKA STEEL hereby guarantees that the products subject matter of this certificate are manufactured and certified by the manufacturer in accordance with the applicable standards and parameters, and that they comply with the European quality standards. The warranty is granted pursuant to Law No. 140/2021.

The guarantee granted by BILKA STEEL for **COLOR** and **CORROSION** characteristics is:

- 30 YEARS WARRANTY for gutter system and folded sheet made of **double sided coated matte steel**
- 15 YEARS WARRANTY for gutter system and folded sheet made of **double sided coated steel**
- 10 YEARS WARRANTY for the **MAGNELLIS** gutter system
- 5 YEARS WARRANTY
- 20 YEARS WARRANTY
- 15 YEARS WARRANTY
- 10 YEARS WARRANTY



BILKA
• roof system • rain system •

GENERAL WARRANTY TERMS AND CONDITIONS

ESTIMATED LIFESPAN 60 YEARS

The warranty covers the products delivered by BILKA STEEL. BILKA STEEL shall not be held liable for any direct or indirect damages as a result of the facts or omissions below:

The products have been chemically damaged in a corrosive environment or because of the prolonged contact with other materials: wet concrete, copper, mortar, soil, paint, acids, bird droppings.

The products have been subject to mechanical or other kind of changes due to inadequate transport, handling or storage (unless BILKA STEEL is liable for such events).

The pre-painted BILKA STEEL products have been cut with abrasive blades or other cutting tools that cause excessive local heating of the processed parts.

The BILKA STEEL products have been machined at a working temperature below -10 degrees C, when machine bending has been used.

The BILKA STEEL products have been tooled at a working temperature below +5 degrees C, when manual bending has been used.

During the storage period, the products have been in direct contact with wet concrete, copper, soil, heat, other corrosive materials or in permanent or prolonged contact with water.

During the use period, direct contact with wet concrete, copper, or other corrosive materials has not been prevented.

The BILKA STEEL products have not been installed in maximum 45 days since their acquisition.

The guarantee does not cover product damages caused by the failure to use the accessories recommended and supplied by BILKA STEEL, or because of the faulty assembly, and/or failure to follow the assembly instructions provided by the manufacturer.

The guarantee does not cover product damages caused by the incorrect use of the retouch spray/scratch paint corrector.

The guarantee does not cover damages arising from events of force majeure, such as: war, riot, natural disasters, fire, etc.

SELLER

Name: _____
Address: _____
VAT No.: _____
Invoice: _____

BENEFICIARY

Name: _____
Address: _____
Shipping address: _____
VAT No./Personal ID No.: _____
Invoice: _____

COLOR and **CORROSION**

for gutter system and folded sheet made of **double sided coated matte steel**

for gutter system and folded sheet made of **double sided coated steel**

for the **MAGNELLIS** gutter system

* The warranty for Magnellis is not valid if the product is installed closer than 200 meters to coastal areas of high salinity or is otherwise exposed to high salinity that can be classified as C5.

This period is also guaranteed by the manufacturers of galvanized steel-sheets covered with polyester paint. BILKA STEEL guarantees for its products that the paint layer will not exfoliate, that they will not be perforated as a result of corrosion, and that the color will have a uniform evolution over time on surfaces with the same level of exposure to ultraviolet radiation.

The claimed damages must be ascertained by the BILKA STEEL representatives who will establish the remediation or replacement deadline, as applicable, in maximum 15 days, in accordance with the provisions laid down in Article 15 of Law No. 140/2021. For this, the purchaser must allow the BILKA STEEL representatives to have access to the concerned products, for inspection and possible repair works.

CE ISO 9001 ISO 14001 ISO 45001

page 1 Copyright © 2024 Bilka v01

The beneficiary shall lose its rights to warranty if, upon the notification of a defect of the BILKA STEEL products, it fails to provide the original product purchase invoice and the original warranty certificate.

The rights conferred by this commercial guarantee shall not affect the rights conferred by the Consumer Protection Law.

Therefore, the beneficiary is entitled to corrective measures from the seller, free of charge, in case of non-conformity of the goods, which are not affected by the commercial guarantee.

SELLER

Name: _____
Address: _____
VAT No.: _____
Invoice: _____

BENEFICIARY

Name: _____
Address: _____
Shipping address: _____
VAT No./Personal ID No.: _____
Invoice: _____

page 2 Copyright © 2024 Bilka v01

NOTE

A series of horizontal dotted lines for writing notes.

NOTE

A series of horizontal dotted lines for writing notes.

EN



 **BILKA**[®]
• roof system • rain system •

SCAN THE QR CODE
FOR MORE DETAILS.



BILKA STEEL SRL

Address: Henri Coandă Street
No. 17, Brasov, Romania

Telephone: +40 733 30 30 30

E-mail: office@bilka.ro

follow us on:

